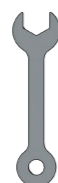


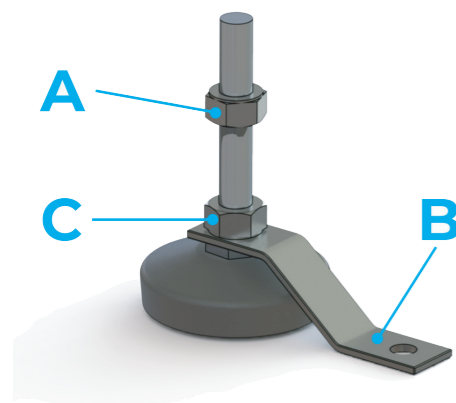


SECURITY FIXING KIT

Tools Required:



10 mm spanner (supplied*)
*in Security Fixing Kit



1. Fit the angled bar (**B**) onto the foot, screw the nut (**C**) tightly against it.

2. Refit the feet to the step ensuring the nut (**A**) is tight against the Step, or base of the Extending Leg (if using).

Please read these instructions, along with the instructions on the reverse.

- EN** THE ANGLED BARS (B) SHOULD BE FITTED TO DIAGONALLY OPPOSITE CORNERS. AT LEAST 15 MM OF THREAD MUST REMAIN INSIDE THE ADJUSTING LEG FOR SAFE USE.
- FR** LES BARRES INCLINÉES (B) DOIVENT ÊTRE INSTALLÉES DANS LES COINS OPPOSÉS EN DIAGONALE. UN FILETAGE D'AU MOINS 15 MM DOIT RESTER À L'INTÉRIEUR DU PIED DE RÉGLAGE POUR UNE UTILISATION EN TOUTE SÉCURITÉ.
- DE** DIE ABGEWINKELTEN STANGEN (B) SOLLTEN AN DIAGONAL GEGENÜBERLIEGENDEN ECKEN ANGEBRACHT WERDEN. ZUR SICHEREN VERWENDUNG MÜSSEN MINDESTENS 15 MM GEWINDE IM STELBEIN BLEIBEN.
- ES** LAS BARRAS EN ÁNGULO (B) DEBEN INSTALARSE EN ESQUINAS DIAGONALMENTE OPUESTAS. AL MENOS 15 MM DE HILO DEBEN PERMANECER DENTRO DE LA PATA DE AJUSTE PARA UN USO SEGURO.
- NL** DE SCHUINE STAVEN (B) MOETEN IN DIAGONAAL TEGENOVERLIGGENDE HOEKEN WORDEN GEPLAATST. ER MOET TEN MINSTE 15 MM DRAAD IN HET STELBEEN BLIJVEN VOOR VEILIG GEBRUIK.
- PT** AS BARRAS INCLINADAS (B) DEVEM SER ENCAIXADAS NOS CANTOS DIAGONALMENTE OPOSTOS. PELO MENOS 15 MM DE FIO DEVEM PERMANECER DENTRO DA PERNA DE AJUSTE PARA USO SEGURO.
- DK** DE VINKLEDE STÆNGER (B) SKAL MONTERES PÅ DIAGONALT MODSATTE HJØRNER. MINDST 15 MM TRÅD SKAL FORBLIVE INDE I JUSTERINGSBENET FOR SIKKER BRUG.
- EL** ΟΙ ΓΩΝΙΑΚΕΣ ΡΑΒΔΟΙ (B) ΠΡΕΠΕΙ ΝΑ ΤΟΠΟΘΕΤΟΥΝΤΑΙ ΣΕ ΔΙΑΓΩΝΙΑ ΑΝΤΙΘΕΤΕΣ ΓΩΝΙΕΣ. ΤΟΥΛΑΧΙΣΤΟΝ 15 ΧΙΛΙΟΣΤΑ ΤΟΥ ΝΗΜΑΤΟΣ ΠΡΕΠΕΙ ΝΑ ΠΑΡΑΜΕΙΝΟΥΝ ΣΤΟ ΕΣΩΤΕΡΙΚΟ ΤΟΥ ΠΟΔΙΟΥ ΠΡΟΣΑΡΜΟΓΗΣ ΓΙΑ ΑΣΦΑΛΗ ΧΡΗΣΗ.



PH 5 - 9

- EN** WIPE DOWN WITH A NON-ABRASIVE CLOTH AND SOAPY WATER.
- FR** ESSUYEZ AVEC UN CHIFFON NON ABRASIF ET DE L'EAU SAVONNEUSE.
- DE** MIT EINEM NICHT SCHEUERNDEN TUCH UND SEIFENWASSER ABWISCHEN.
- ES** LIMPIELO CON UN PAÑO NO ABRASIVO Y AGUA CON JABÓN.
- NL** AFNEMEN MET EEN NIET-SCHURENDE DOEK EN ZEEPACHTIG WATER.
- PT** RETIRAR COM PAÑO NÃO ABRASIVO E ÁGUA COM SABÃO.
- DK** AFTØRRES MED EN IKKE-SLIBENDE KLUD OG SÆBEVAND.
- EL** ΣΚΟΥΠΙΣΤΕ ΜΕ ΕΝΑ ΜΗ ΛΕΙΑΝΤΙΚΟ ΠΑΝΙ ΚΑΙ ΣΑΠΟΥΝΩΝΕΡΟ.

CLEANING INSTRUCTIONS
REINIGUNGSANWEISUNGEN
SCHOONMAAK INSTRUCTIES
RENGØRINGSINSTRUKTIONER

INSTRUCTIONS DE NETTOYAGE
INSTRUCCIONES DE LIMPIEZA
INSTRUÇÕES DE LIMPEZA
ΟΔΗΓΙΕΣ ΚΑΘΑΡΙΣΜΟΥ



BIG FOOT® HALF STEP

Welcome to your new Gordon Ellis product.
We hope that it proves a useful aid in your daily life.



SEE INSIDE AND REVERSE FOR FITTING INSTRUCTIONS
AVAILABLE IN THE FOLLOWING LANGUAGES:
EN FR DE ES NL PT DK EL



MAXIMUM USER WEIGHT	POIDS MAXIMUM DE L'UTILISATEUR
MAX 220 Kg 485 lbs	
MAXIMALES BENUTZGERWICHT	PESO MÁXIMO DEL USUARIO
PESO MÁXIMO DE USO	MAKS. BRUGERVEGT
	MAXIMUMGEWICHT VAN GEBRUIKER
	ΑΝΩΤΑΤΟ ΟΡΙΟ ΒΑΡΟΥΣ ΤΟΥ ΧΡΗΣΤΗ



EN ANY SERIOUS ACCIDENT OCCURRING THROUGH USE SHOULD BE REPORTED TO THE MANUFACTURER - CONTACT DETAILS BELOW

FR TOUT ACCIDENT GRAVE SURVENANT PENDANT L'UTILISATION DOIT ÊTRE SIGNALÉ AU EC REP - COORDONNÉES CI-DESSOUS

DE JEDER SCHWERE UNFALL WÄHREND DES GEBRAUCHS MUSS EC REP GEMELDET WERDEN - KONTAKTDATEN UNTEN

ES CUALQUIER ACCIDENTE GRAVE QUE OCURRA DURANTE EL USO DEBE INFORMARSE A EC REP - DETALLES DE CONTACTO A CONTINUACIÓN

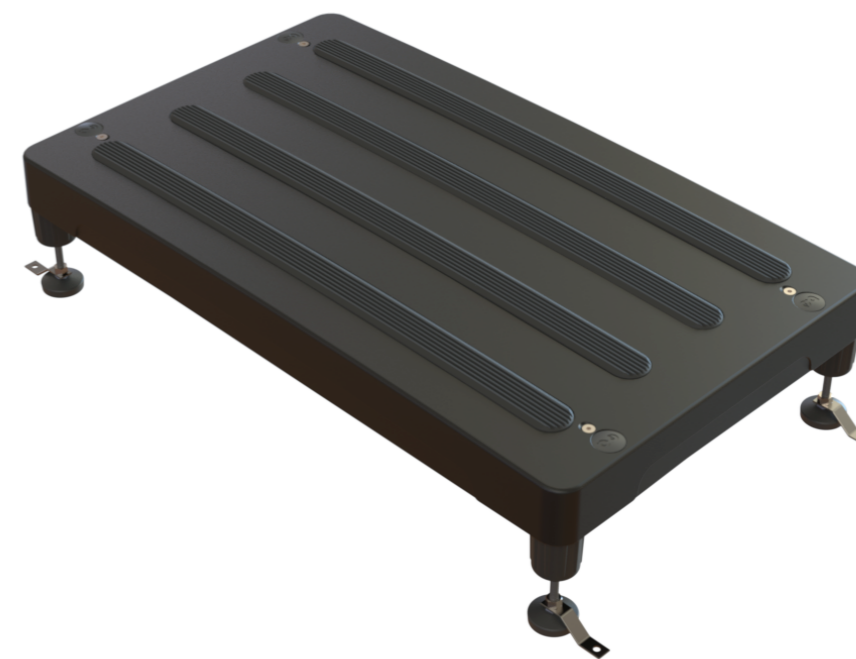
NL ELK ERNSTIG ONGEVAL TIJDENS HET GEBRUIK MOET WORDEN GEMELD AAN EC REP - CONTACTGEGEVENS HIERONDER

PT QUALQUER INCIDENTE SÉRIO QUE OCORRA DURANTE O USO DEVE SER RELATADO AO FABRICANTE - DETALHES DE CONTACTO ABAIXO

DK ENHVER ALVORLIG HÆNDELSE, DER OPSTÅR UNDER BRUG, SKAL RAPPORTERES TIL PRODUCENTEN - KONTAKTOPLYSNINGER NEDENFOR

EL ΚΑΘΕ ΣΟΒΑΡΟ ΣΥΜΒΑΝ ΠΟΥ ΕΜΦΑΝΙΖΕΤΑΙ ΚΑΤΑ ΤΗ ΧΡΗΣΗ ΠΡΕΠΕΙ ΝΑ ΑΝΑΦΕΡΕΤΑΙ ΣΤΟΝ ΚΑΤΑΣΚΕΥΑΣΤΗ - ΠΑΡΑΚΑΤΩ ΣΤΟΙΧΕΙΑ ΕΠΙΚΟΙΝΩΝΙΑΣ

Your **BIG FOOT® HALF STEP** was specifically developed by our UK Design Team with the intention of compensating for an injury, or overcoming a temporary or permanent disability. Hopefully making daily living that little bit easier.



DESIGNED AND MADE IN THE UK



GORDON ELLIS & CO.
TRENT LANE
CASTLE DONINGTON
DERBY. ENGLAND DE74 2AT

EC REP

AUTHORISED REPRESENTATIVE
ADVENA LTD, TOWER BUSINESS CENTRE, 2ND FLOOR, TOWER STREET, SWATAR, BKR 4013 MALTA



MD

IFU-REF 66111/0523-1

REF 66111 + 66111/B

