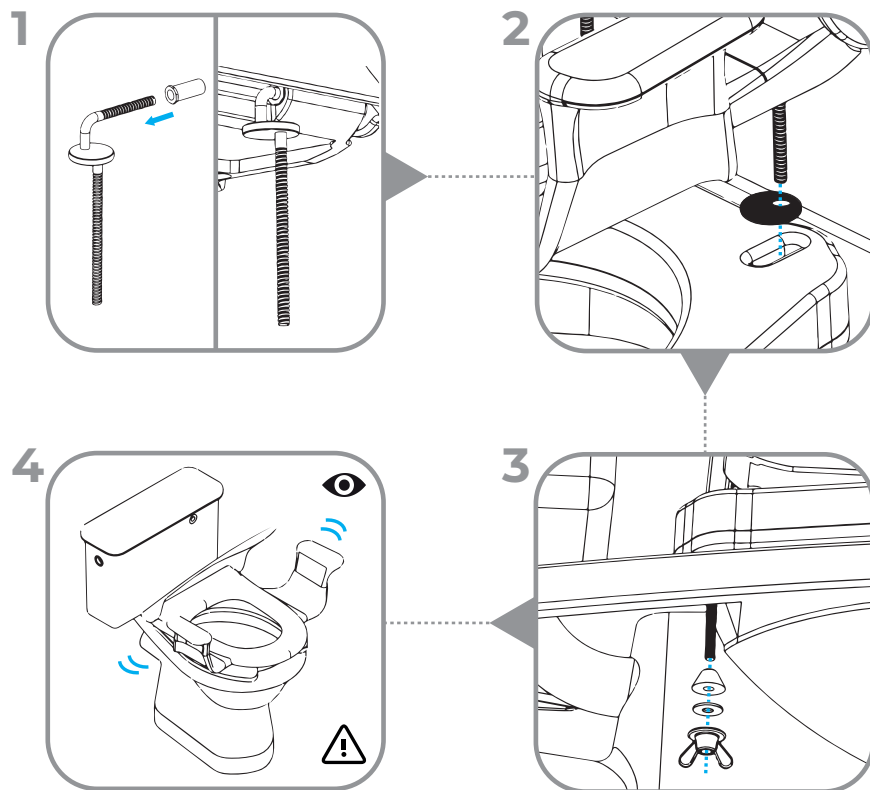


C



- Product information:**
 Overall dimensions = 42.6 cm (L) x 35.5 cm (W) x 5 cm (H)
 Product weight (minus fixings) = 0.5 kg
- This product should be recycled according to national guidelines

View our entire range online at gordonellishealthcare.co.uk



Trent Lane, Castle Donington, Derby, DE74 2AT, England.

enquiries@gordonellis.co.uk

gordonellishealthcare.co.uk

TEL: +44(0) 1332 810504

Company registered in England: No. 231734

VAT No. GB 428 4666 26

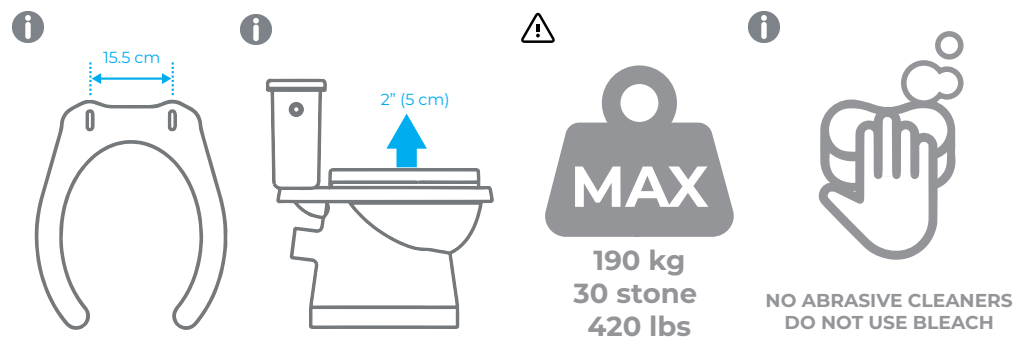
PRIMA[®] LIFT

TOILET SEAT RAISER

PART No. 66190



USER GUIDE

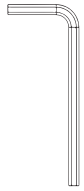


Complies with ISO
 17966:2016 standards
 for Assistive Products

66190/01-20 JA

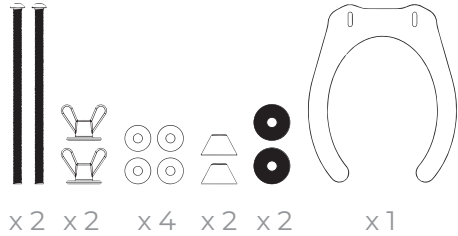
❗ For use with existing toilet seats: **A** → **B**

Tools supplied:

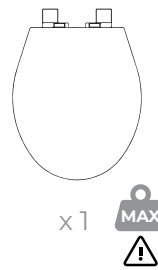


x1

Parts supplied:

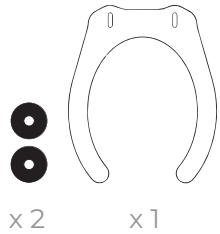


Parts needed:

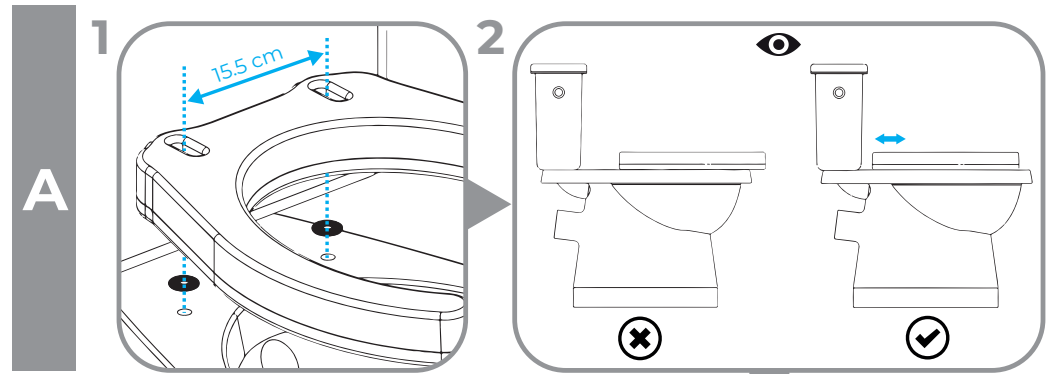
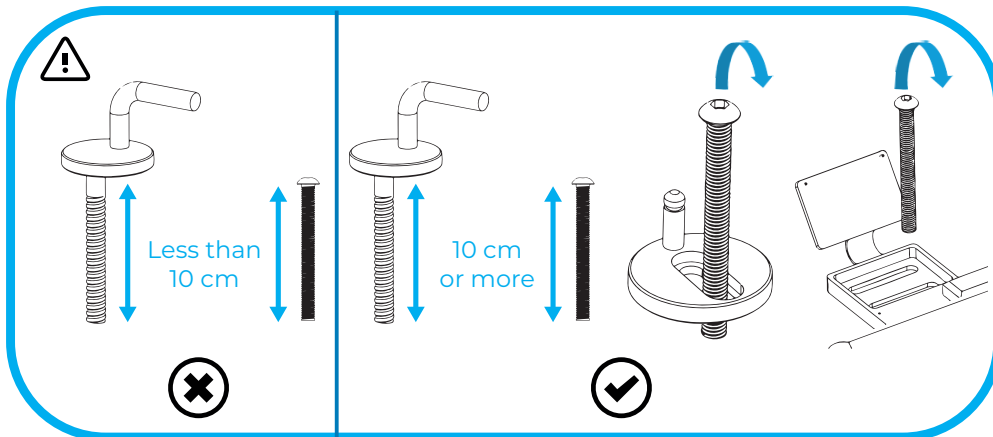
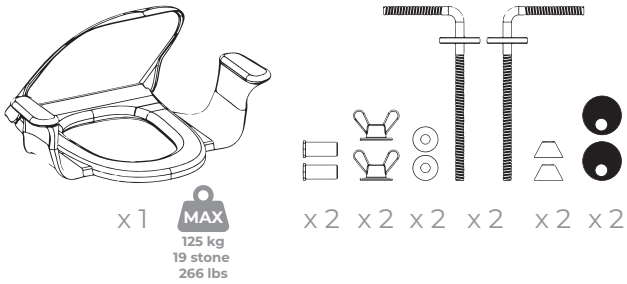


❗ For use with Nobi toilet seats: **A** → **C**

Parts supplied:



Parts needed: Part No. 62450/ 62455



B1 or C1

